

## SETTING UP GREENRADIUS IN HYPER-V

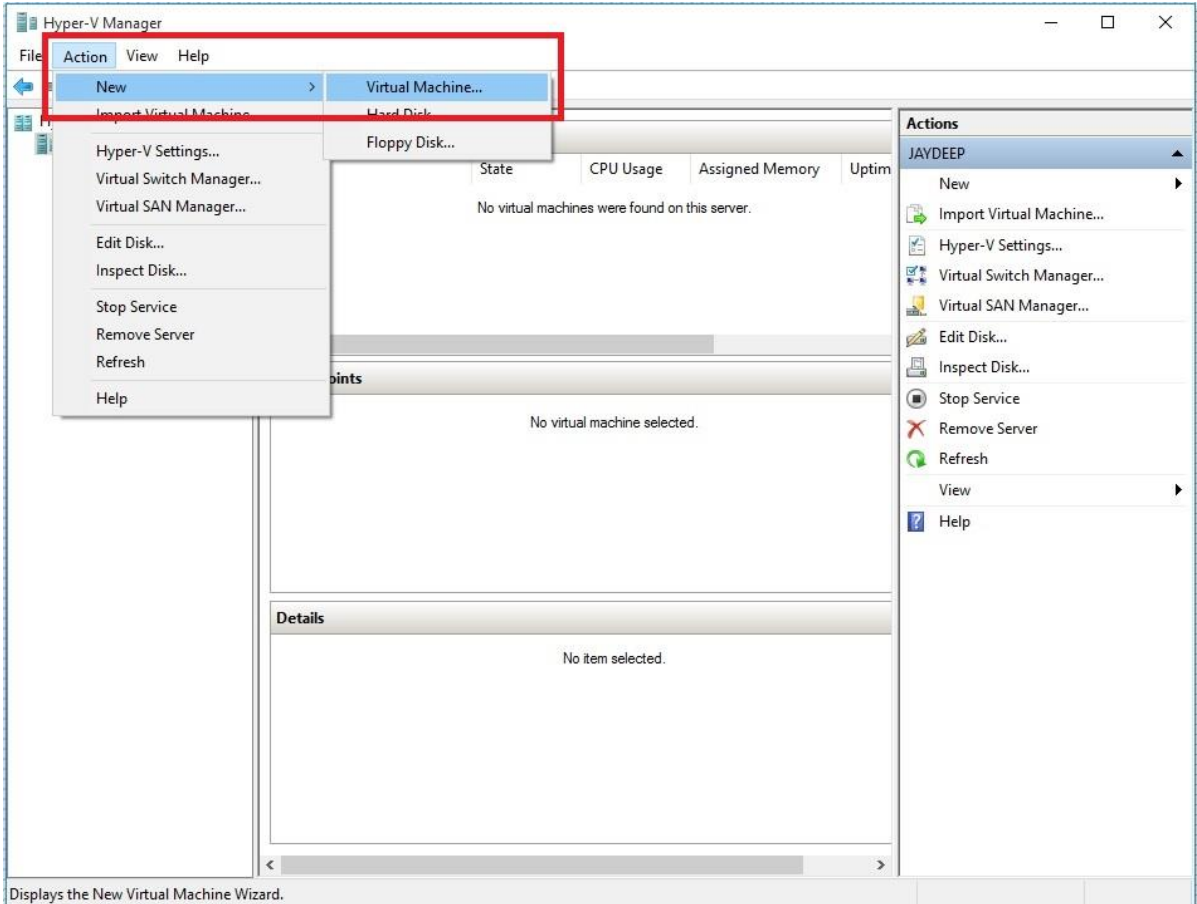
This document provides steps to set up GreenRADIUS in Microsoft Hyper-V

### PREREQUISITES

- Windows machine on which Hyper-V is installed
- GreenRADIUS OVA file (download it from [here](#))
- Microsoft Virtual Machine Converter 3.0 installed (download it from [here](#))
- Software to uncompress such as 7-Zip or WinZip

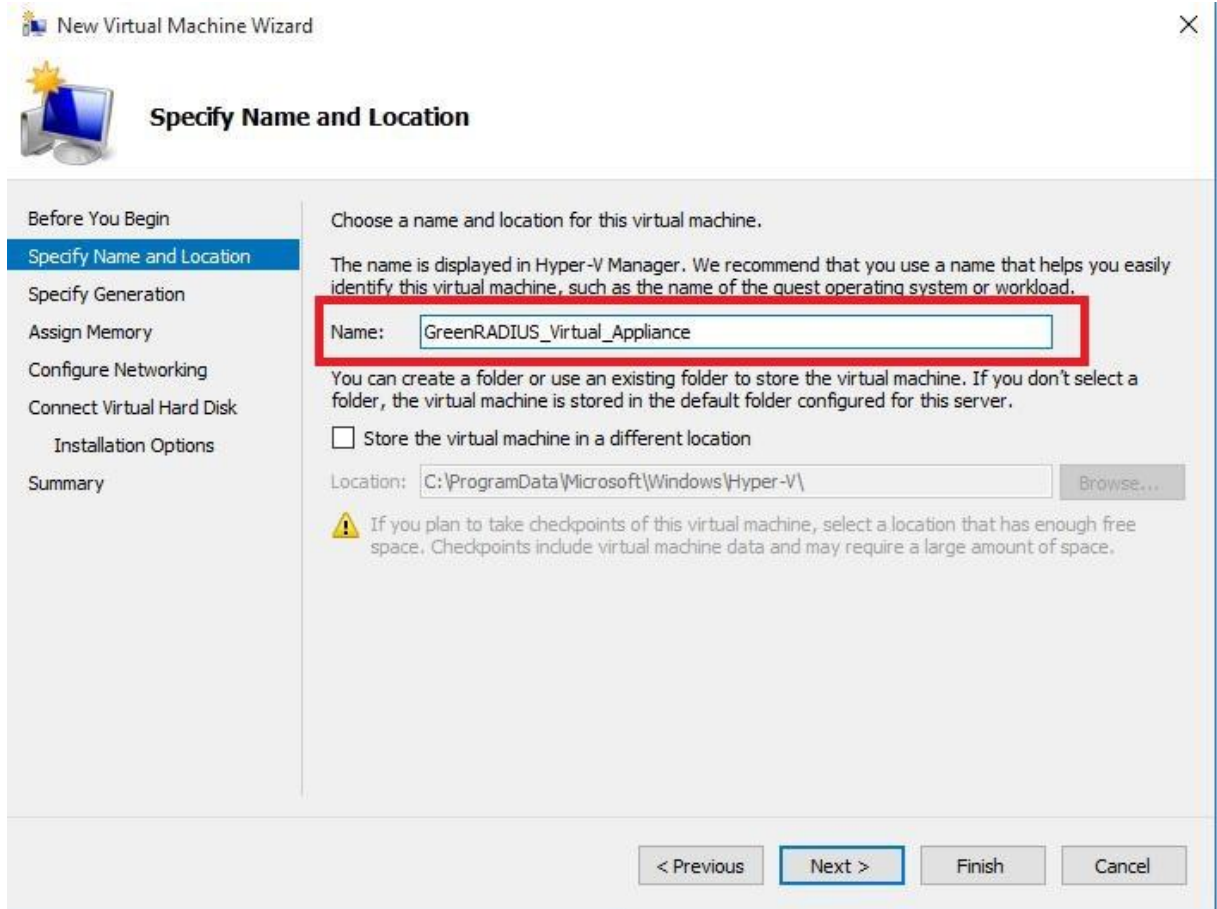
### STEPS

1. Log in to the Windows machine, and extract the GreenRADIUS OVA file using software to uncompress such as 7-Zip or WinZip to a folder (e.g. D:\GreenRADIUS Virtual Appliance)
2. It should create 'GreenRADIUS\_Virtual\_Appliance<version number>.vmdk' (e.g. GreenRADIUS\_Virtual\_Appliance\_v4.1.11.11.vmdk) file in that folder. Note the path of vmdk file
3. Open powershell using administrative access and run the following commands:
  - # Import-Module "C:\Program Files\Microsoft Virtual Machine Converter\MvmcCmdlet.psd1"
  - Convert the GreenRADIUS VMDK file (extracted in above steps) to Hyper-V file (i.e. VHDX) using the following command, and note the path of the output VHDX file: (e.g. in the following command, the vmdk file used is 'D:\GreenRADIUS Virtual Appliance\GreenRADIUS\_Virtual\_Appliance\_v4.1.11.11.vmdk' and the output file is specified as 'D:\Demo\GreenRADIUS\_Virtual\_Appliance.vhdx'
    - # ConvertTo-MvmcVirtualHardDisk -SourceLiteralPath "D:\GreenRADIUS Virtual Appliance\GreenRADIUS\_Virtual\_Appliance\_V4.1.11.11-disk1.vmdk" -DestinationLiteralPath "D:\Demo\GreenRADIUS\_Virtual\_Appliance.vhdx" -VhdType DynamicHardDisk -VhdFormat Vhdx
4. Open 'Hyper-V Manager' console, select **Action** Tab, click on **New** and select **Virtual Machine**, as shown in the screenshot given below:



Displays the New Virtual Machine Wizard.

5. In **New Virtual Machine Wizard**, specify **Name** and **Location** and click on **Next**



New Virtual Machine Wizard

### Specify Name and Location

Before You Begin

**Specify Name and Location**

Specify Generation

Assign Memory

Configure Networking

Connect Virtual Hard Disk

Installation Options

Summary

Choose a name and location for this virtual machine.


The name is displayed in Hyper-V Manager. We recommend that you use a name that helps you easily identify this virtual machine, such as the name of the guest operating system or workload.

Name:

You can create a folder or use an existing folder to store the virtual machine. If you don't select a folder, the virtual machine is stored in the default folder configured for this server.

Store the virtual machine in a different location

Location:

 If you plan to take checkpoints of this virtual machine, select a location that has enough free space. Checkpoints include virtual machine data and may require a large amount of space.

< Previous   **Next >**   Finish   Cancel



6. Select **Generation 1** and click on **Next**

New Virtual Machine Wizard

### Specify Generation

Before You Begin  
Specify Name and Location  
**Specify Generation**  
Assign Memory  
Configure Networking  
Connect Virtual Hard Disk  
Installation Options  
Summary

Choose the generation of this virtual machine.

Generation 1  
This virtual machine generation supports 32-bit and 64-bit guest operating systems and provides virtual hardware which has been available in all previous versions of Hyper-V.

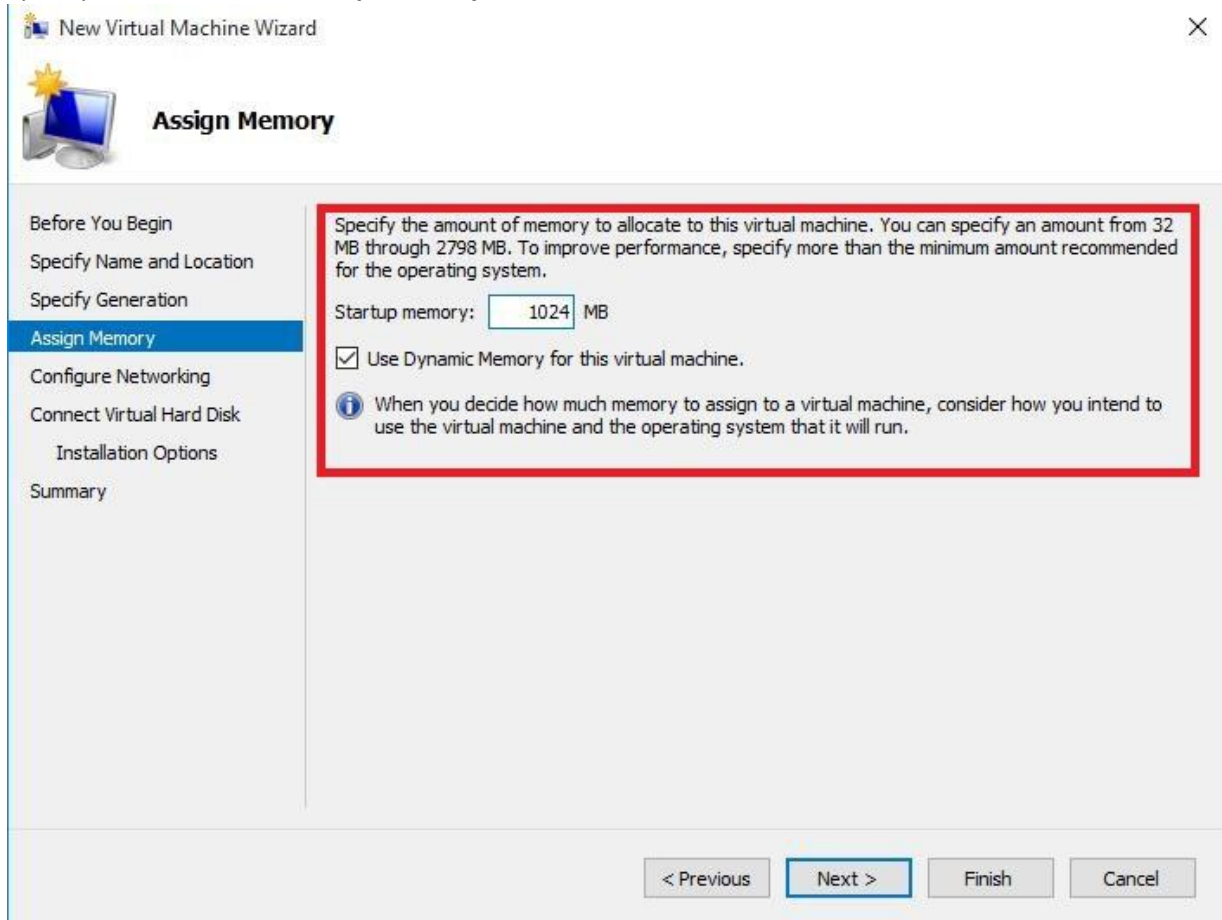
Generation 2  
This virtual machine generation provides support for newer virtualization features, has UEFI-based firmware, and requires a supported 64-bit guest operating system.

Once a virtual machine has been created, you cannot change its generation.

[More about virtual machine generation support](#)

< Previous   **Next >**   Finish   Cancel

7. Specify RAM in MB for **Startup Memory** and click on **Next**



New Virtual Machine Wizard

### Assign Memory

Before You Begin  
Specify Name and Location  
Specify Generation  
**Assign Memory**  
Configure Networking  
Connect Virtual Hard Disk  
Installation Options  
Summary

Specify the amount of memory to allocate to this virtual machine. You can specify an amount from 32 MB through 2798 MB. To improve performance, specify more than the minimum amount recommended for the operating system.

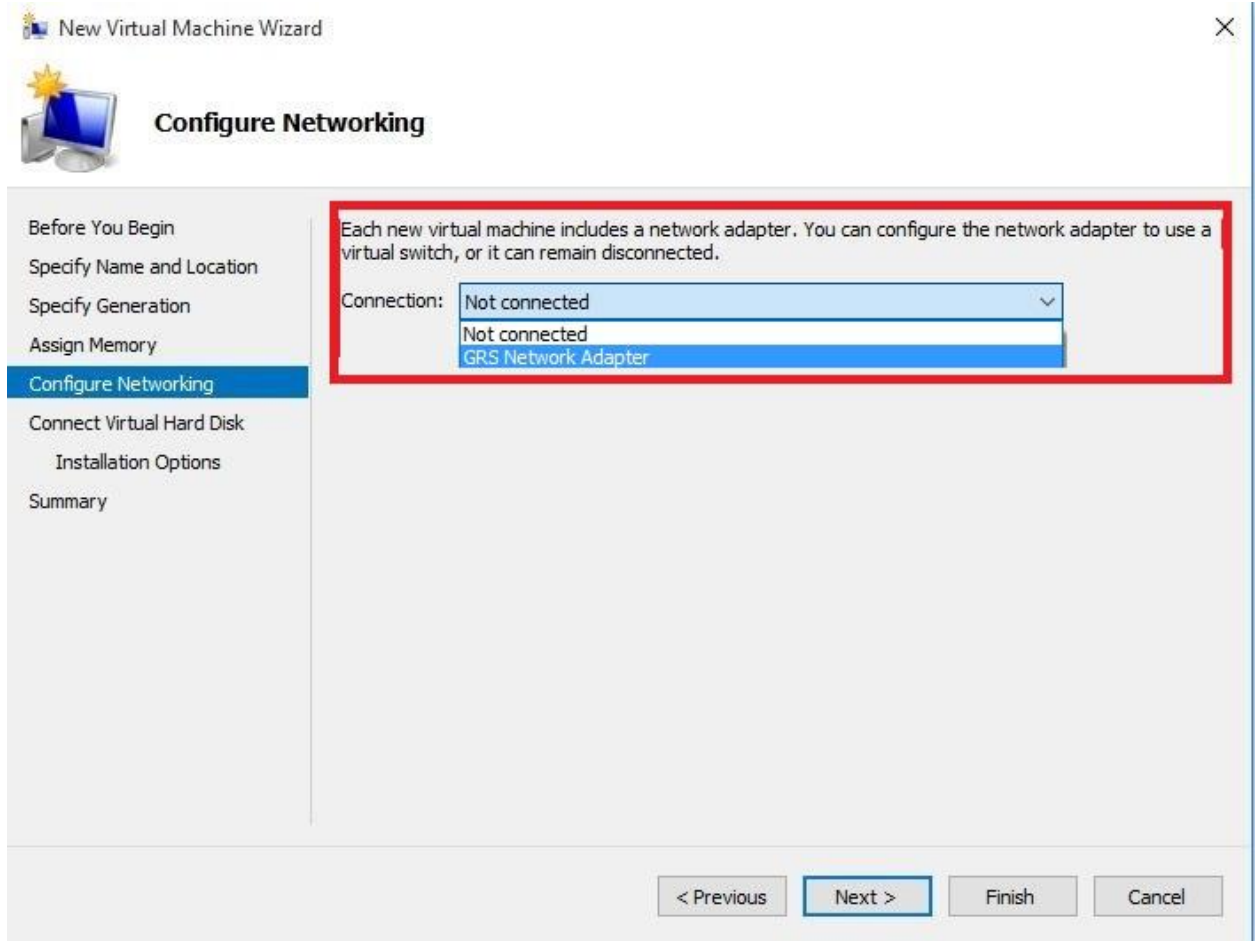
Startup memory:  MB

Use Dynamic Memory for this virtual machine.

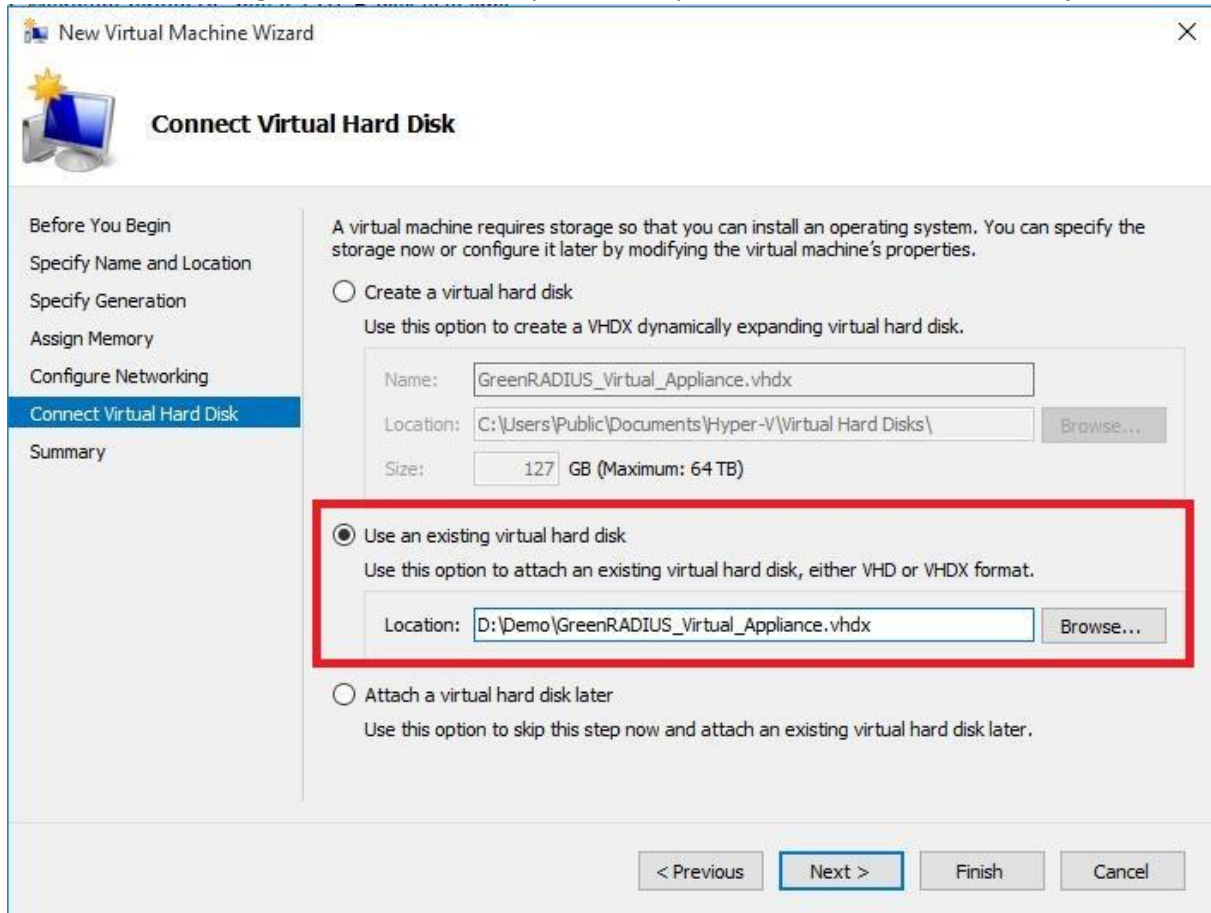
**i** When you decide how much memory to assign to a virtual machine, consider how you intend to use the virtual machine and the operating system that it will run.

< Previous   **Next >**   Finish   Cancel

8. Select **Network Adapter** and click on **Next**



9. Select **Use an existing virtual hard disk** and provide the path of the vhdx file noted in **step 3**



New Virtual Machine Wizard

### Connect Virtual Hard Disk

Before You Begin  
Specify Name and Location  
Specify Generation  
Assign Memory  
Configure Networking  
**Connect Virtual Hard Disk**  
Summary

A virtual machine requires storage so that you can install an operating system. You can specify the storage now or configure it later by modifying the virtual machine's properties.

Create a virtual hard disk  
Use this option to create a VHDX dynamically expanding virtual hard disk.

Name:   
Location:    
Size:  GB (Maximum: 64 TB)

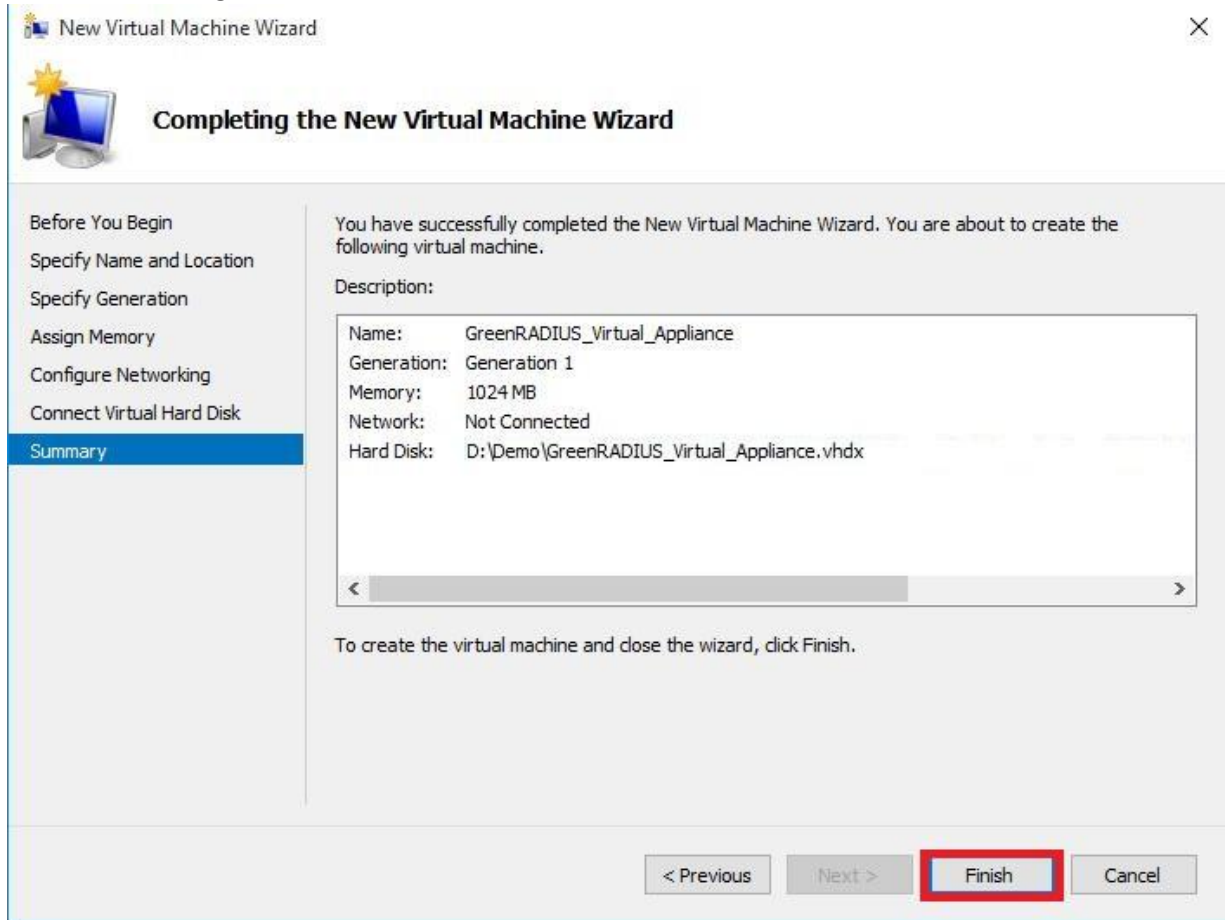
**Use an existing virtual hard disk**  
Use this option to attach an existing virtual hard disk, either VHD or VHDX format.

Location:

Attach a virtual hard disk later  
Use this option to skip this step now and attach an existing virtual hard disk later.

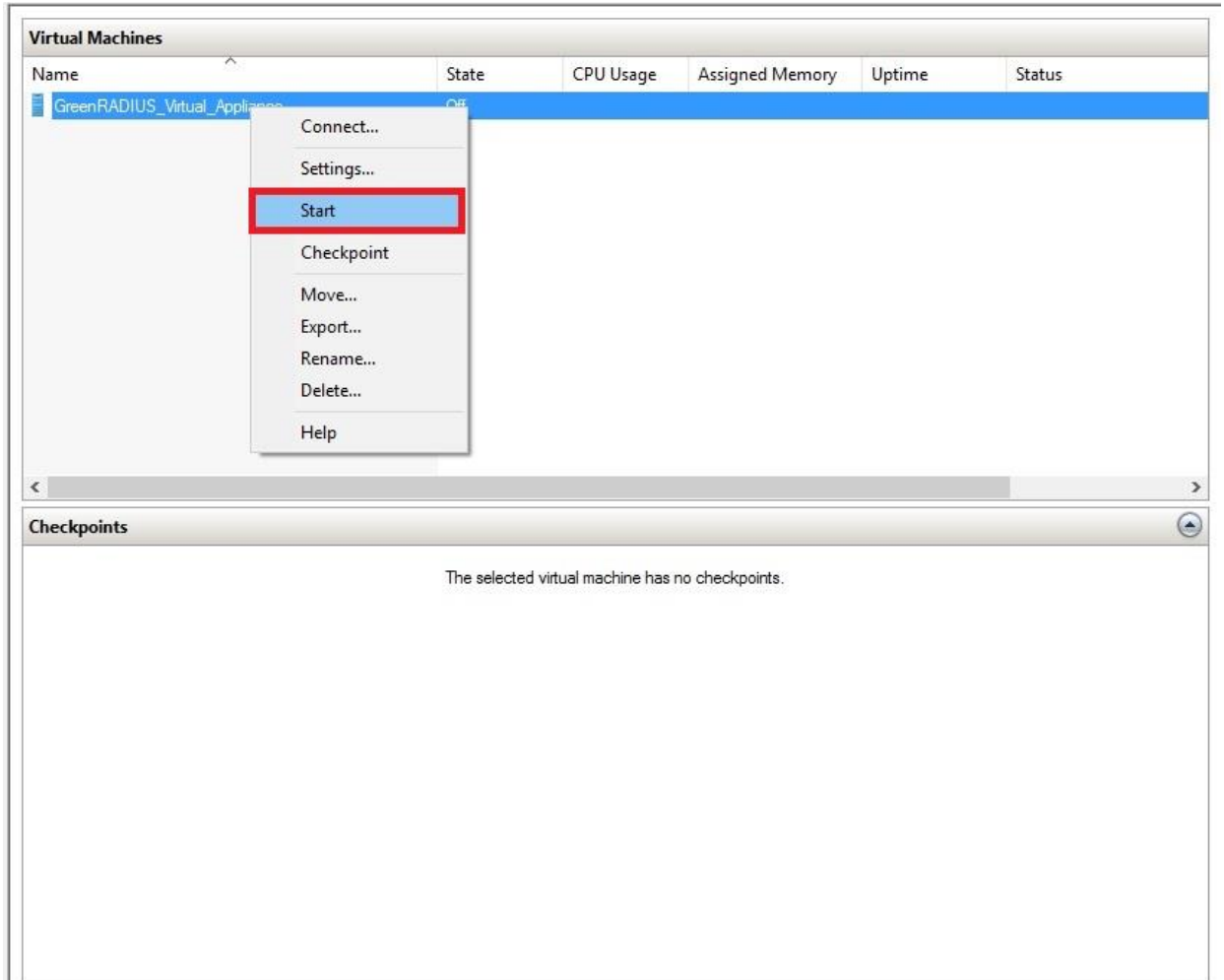
< Previous   **Next >**   Finish   Cancel

10. Review the settings and click on **Finish**

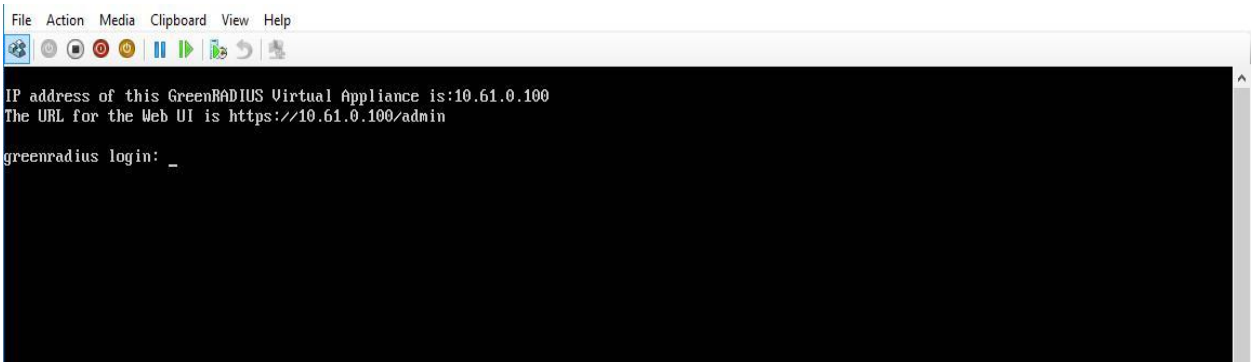




11. Under **Virtual Machines**, right click on newly created virtual machine and click on **Start**



12. You should see the GreenRADIUS virtual appliance console window



13. Log in to the GreenRADIUS web admin console any web browser and using following link:  
<https://<hostname or IP address of GreenRADIUS>/admin>